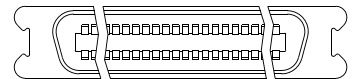
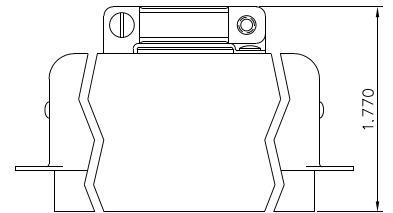
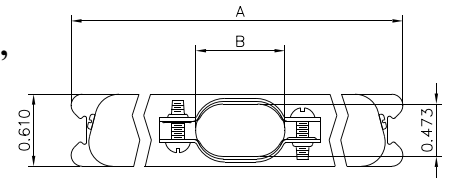


C191 Series

**Centronic Connectors, Solder Type,
Cable Running**

Specifications:

Contact Resistance: 30mΩ @ 100mA DC
 Insulator Resistance: 5000MΩmin. @ 500V DC
 Current Rating: 5AMP
 Voltage: 1000V AC For 1 minute
 Operating Temperature: -55°C~+105°C
 Contact: Phosphor Bronze, Stamped
 Housing: PBT(30% Glass Fiber), UL94V-0
 Shell: Steel, Zinc Plated or Tinned



Dimensional Unit: inch

Ordering Information

C191 - 30 50 0 - 0G B

- Series No. ————
- Gender: ————
 - 30 - Male (Plug), Latches
 - 40 - Female (Receptacle) Latches
- No. of Pins: ————
 - 36,50
- Alternation Code (Meaningless) ————
- Insulator Color: ————
 - B - Blue
 - K - Black
 - G - Gray
- Contact Plating: ————
 - 0G - Gold Flash
 - 05 - 5u" Selective Gold
 - 10 - 10u" Selective Gold
 - 15 - 15u" Selective Gold
 - 30 - 30u" Selective Gold

| Positions | A | B |
|-----------|-------|-------|
| 36 | 2.426 | 0.625 |
| 50 | 3.020 | 0.766 |