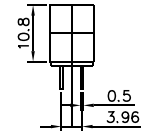
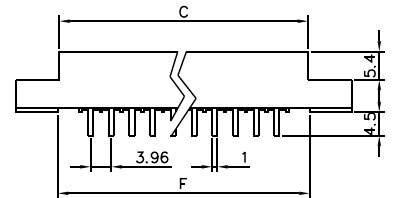
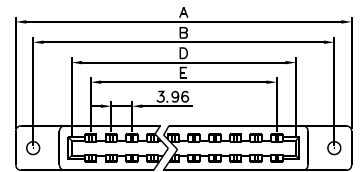


C159 Series

Edge Connector, 3.96mm(0.156")

Specifications:

Contact Resistance: 16mΩ @ 100mA DC
 Insulator Resistance: 5000MΩmin. @ 500V DC
 Current Rating: 2AMP
 Voltage: 1600V AC For 1 minute
 Operating Temperature: -55°C~+105°C
 Contact: Brass or Phosphor Bronze, Gold Plated
 Housing: PC, UL94V-0



Ordering Information

C159 - 24 1
 Series No. Termination Type:
 No. of Pins: 1 - Solder Eyelet
 20,24,30,36, 2 - Dip Solder
 44,56,72 3 - Bus Bar

Positions	A	B	C	D	E	F
20	64.30	57.64	47.60	44.30	35.64	48.20
24	68.94	62.59	54.85	51.62	43.56	53.85
30	80.87	74.52	66.78	63.55	55.44	65.78
36	92.78	86.43	78.69	75.46	67.32	77.69
44	108.66	102.31	94.57	91.34	83.16	93.57
56	132.48	126.13	118.39	115.16	106.92	117.39
72	164.16	157.81	150.07	146.84	138.60	149.07