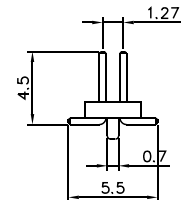
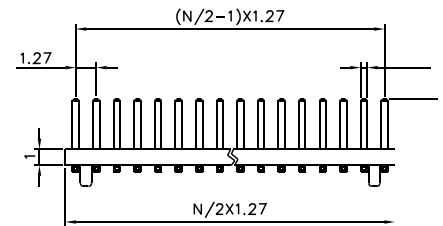


C112-C Series

**Pin Header, 1.27mm(0.050"),
SMT Type, Locating Peg**

Specifications:

Contact Resistance: 30mΩ @ 100mA DC
 Insulator Resistance: 1000MΩmin. @ 500V DC
 Current Rating: 1AMP
 Voltage: 500V AC For 1 minute
 Operating Temperature: -55°C~+105°C
 Contact: Brass or Phosphor Bronze, Stamped
 Housing: Nylon 6T, UL94V-0



Ordering Information

<u>C112-C - 60 G 1</u>	
Series No.:	Plastic Thickness:
No. of Pins:	1 - 0.85mm
02~100	2 - 1.00mm
Contact Plating:	3 - 1.60mm
T - Tinned	4 - 2.00mm
G - Gold Flash All Over	5 - 2.54mm