



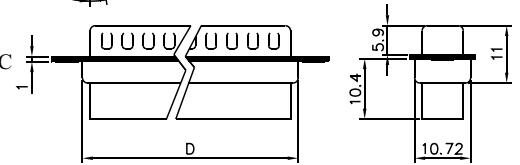
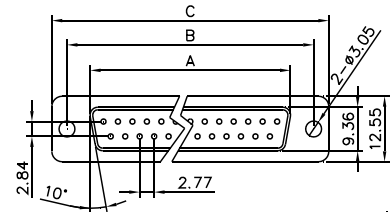
# C102 Series

## D-Sub Crimp Type

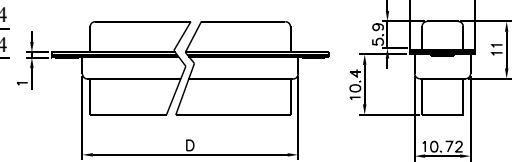
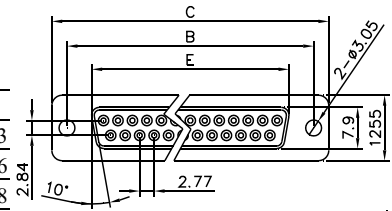
### Specifications:

Contact Resistance: 30mΩ @ 100mA DC  
 Insulator Resistance: 1000MΩmin. @ 500V DC  
 Current Rating: 5AMP  
 Voltage: 1000V AC For 1 minute  
 Operating Temperature: -55°C~+105°C  
 Contact: Brass or Phosphor Bronze, Stamped  
 Housing: PBT, UL94V-0

<Male>



<Female>



### Ordering Information

C102 - 25 F T K 0

Series No. \_\_\_\_\_  
 No. of Pins: \_\_\_\_\_  
 Gender: \_\_\_\_\_  
 Shell Plating: \_\_\_\_\_  
 Screw Type: \_\_\_\_\_  
 Insulator Colour: \_\_\_\_\_

Positions	A	B	C	D	E
09	17.78	24.99	31.04	19.36	16.33
15	26.15	33.32	39.24	27.64	24.66
25	39.94	47.04	53.04	41.08	38.38
37	56.56	63.50	69.62	57.38	54.84
50	52.86	61.11	66.90	55.30	52.34