

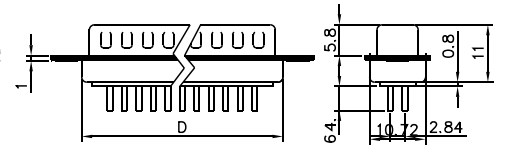
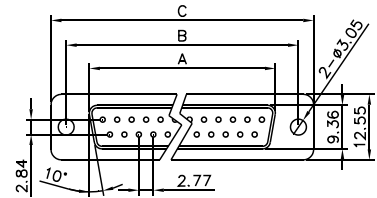
C101 Series

D-Sub Dip Type, Straight

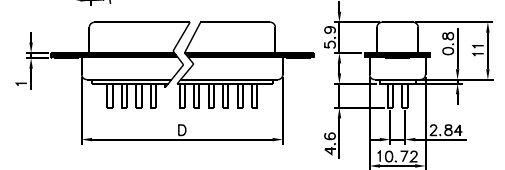
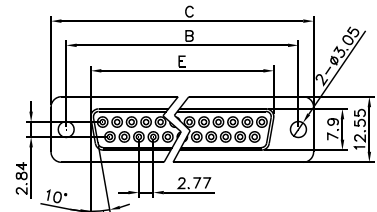
Specifications:

Contact Resistance: 30m @ 100mA DC
 Insulator Resistance: 1000M min. @ 500V DC
 Current Rating: 5AMP Ω
 Voltage: 1000V AC For 1 minute
 Operating Temperature: -55°C~+105°C
 Contact: Brass or Phosphor Bronze, Stamped
 Housing: PBT, UL94V-0

<Male>



<Female>



Ordering Information

C101 - 25 FT B 0

Series No. _____
 No. of Pins: _____
 09,15,25,37,50
 Gender: _____
 M - Male
 F - Female
 Shell Plating: _____
 C - Chromeplated
 T - Tinned
 Screw Type: _____
 0 - W/O Screws
 1 - Screw #4-40
 Insulator Colour: _____
 B - Blue
 K - Black
 W - White

Positions	A	B	C	D	E
09	17.78	24.99	31.04	19.36	16.33
15	26.15	33.32	39.24	27.64	24.66
25	39.94	47.04	53.04	41.08	38.38
37	56.56	63.50	69.62	57.38	54.84
50	52.86	61.11	66.90	55.30	52.34