



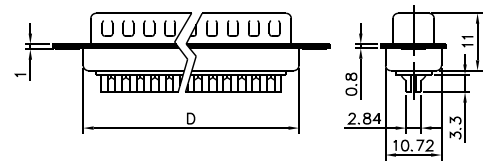
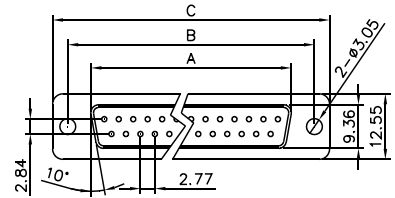
# C100 Series

## D-Sub Solder Type

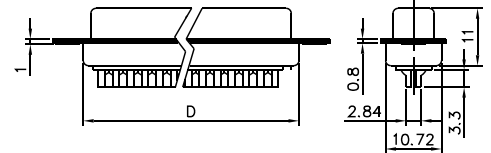
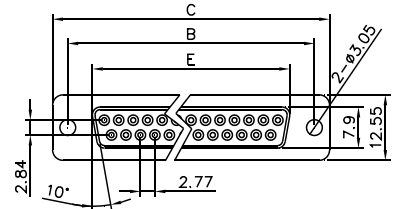
### Specifications:

Contact Resistance: 30mΩ @ 100mA DC  
 Insulator Resistance: 1000MΩmin. @ 500V DC  
 Current Rating: 5AMP  
 Voltage: 1000V AC For 1 minute  
 Operating Temperature: -55°C~+105°C  
 Contact: Brass or Phosphor Bronze, Stamped  
 Housing: PBT, UL94V-0

<Male>



<Female>



### Ordering Information

C100 - 25 FT B 0

- Series No. \_\_\_\_\_
- No. of Pins: \_\_\_\_\_  
09,15,25,37,50
- Gender: \_\_\_\_\_  
M - Male  
F - Female
- Shell Plating: \_\_\_\_\_  
C - Chromeplated  
T - Tinned
- Screw Type: \_\_\_\_\_  
0 - W/O Screws  
1 - Screw #4-40
- Insulator Colour: \_\_\_\_\_  
B - Blue  
K - Black  
W - White

Positions	A	B	C	D	E
09	16.92	24.99	30.81	19.36	16.33
15	25.25	33.32	39.14	27.64	24.66
25	38.96	47.04	53.04	41.08	38.38
37	55.42	63.50	69.32	57.38	54.84
50	52.86	61.11	66.90	55.30	52.34